

THERMO BRASS 900/500/400

Copyright Thermocompact 2018

1. General specifications	4. Patents
2. Detailed characteristics	5. Tests and comparison performances
3. Usage recommended	

1. GENERAL SPECIFICATIONS

THERMO BRASS 900® , THERMO BRASS 500® and THERMO BRASS 400® are brass wires of high quality, made with very pure alloy.

They are all recommended for standard application requiring extreme accuracy and good surface finish.

- THERMO BRASS 500® is particularly recommended for machining complex parts requiring high taper angle cutting of the wire up to 12°.
- THERMO BRASS 400® is particularly recommended for machining complex parts that require high taper angle cutting of the wire up to 20°.

2. DETAILED CHARACTERISTICS

CORE:	Brass 63/37		
DIAMETER TOLERANCE:	0 / -0.002 mm		
OVALISATION:	0.002 mm (max)		
	THERMO BRASS 900®	THERMO BRASS 500®	THERMO BRASS 400®
TENSILE STRENGTH:	949 N/mm ²	460 N/mm ²	441 N/mm ²
YIELD STRENGTH:	844 N/mm ²	323 N/mm ²	278 N/mm ²
ELONGATION:	2.6%	19%	22%
CONDUCTIBILITY:	22% IACS	25% IACS	26% IACS

3. USAGE RECOMMENDED

USE ON MACHINE: All EDM machines, recommended for Japanese machines.

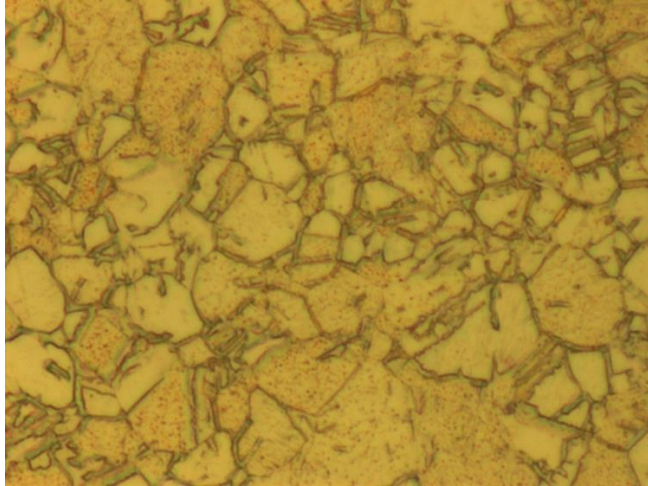
USAGE RECOMMENDED: THERMO BRASS 900® : General mechanic, molds, dies and tools.
THERMO BRASS 500® and 400® : General mechanic, molds.

4. PATENTS

Manufactured in Europe by Thermocompact.
Manufactured in Asia by HWA.

5. TESTS AND COMPARISON PERFORMANCES

THERMO BRASS 900®, **THERMO BRASS 500®** and **THERMO BRASS 400®**
are made with very pure alloy.



Picture: metallographic section of **Thermo Brass 900/500/400**

NB: this product specification sheet is upgraded on a regular basis, please check it regularly to obtain new tests and comparison performances.